



سي اتش سي لمقاولات البناء ش.ذ.م.م  
**CHC Building Contracting L.L.C**

**Growing up with  
Experience & Confidence**





سي اتش سي لمقاولات البناء ش.ذ.م.م  
*CHC Building Contracting L.L.C*

We achieve success by strictly adhering  
to the highest standards of safety and quality.



# Table of Contents

Vision & Mission -----	5
Messages from Chairman and Director -----	6-7
Company Profile -----	8-9
Our Services -----	10-11
Our Team -----	12-13
Organization Chart -----	14
QHSE & CSR -----	15-16
List of machines and tools -----	17
List of Projects -----	18-20
Project Details -----	21-48
Trade license Dubai -----	49
Trade license Abu Dhabi -----	50







سي اتش سي لمقاولات البناء ش.ذ.م.م  
**CHC Building Contracting L.L.C**

## Vision

CHC Building Contracting LLC is always committed to deliver value to the contracting industry across UAE. We define success as a valuable addition to all stakeholders including customers, suppliers, employees, shareholders, and the environment we exist. Our vision is to attain an “all inclusive” success with commitment to quality, passion for innovation and learning, strict adherence to schedules and respect to customers’ needs. We achieve this by converting our collective expertise into supreme quality infrastructure delivered at reasonable prices.

## Mission

CHC Building Contracting LLC targets to grow steadily to become a market leader in the construction industry. The company is determined to retain all of its customers. It will also add new customers gradually. The company is committed to invest in training and technology in order to pioneer the construction industry.

**You dream of buildings  
that dignify. We build it  
in reality**

## Message from Chairman



سي اتش سي لمقاولات البناء ش.ذ.م.م  
CHC Building Contracting L.L.C

It is an honour of great measure to introduce one of the leading contracting companies in the region.

Taking daring steps in the industry from the start, we have amounted to become a key player. Our clients' needs are satisfied to the fullest by constructing quality infrastructure while using innovative technologies to deliver outstanding results at the same time.

From the time of its initiation in 2004, CHC has been working hard and has propelled towards improvements that has made us a frontrunner in the construction industry. Having set the benchmarks since our initiation, our immensely specialised team and world-class subcontractors have helped us to exceed our clients' expectations.

In our journey towards success, we are considerate towards the needs of all stakeholders and pay great attention to every minute details. This gives us great energy and strength. This determination to surpass the clients' expectations has brought us excellence in this sector.

The future is promising. Let us unite to scale together to new heights.

**Sincerely,**  
**Hassan Hammoud**  
**Chairman and MD**  
**CHC Building Contracting L.L.C**





سي اتش سي لمقاولات البناء ش.ذ.م.م  
CHC Building Contracting L.L.C

## Message from Director



Warm greetings from CHC!

Taking immeasurable pleasure introducing CHC Building Contracting LLC., I would like to welcome the new and old customers alike, who have kept us ever innovating. The reason for our reputation is the various successful projects that have been completed since 2004.

CHC believes that delivering quality without compromise is the best way to do business. Since our inception, this has been our foremost strategy.

The company has always made sure that everything that we build is of the highest quality and standard. This is made certain by employing the finest human resources, who are specialists in their respective fields.

We have effective project management skills, project scheduling competence and people management ingenuity that secure low costs to our clients as we become a benchmark in the industry.

As we continue this expedition into the promising future, I invite you to join hands with us. Let us grow together. Together we shall.

**Sincerely,**  
**Buthaina Hammoud**  
**Director**  
**CHC Building Contracting L.L.C**



## Company Profile

CHC Building Contracting LLC was established in Dubai in 2004. CHC has become one of the foremost contracting companies in the region by executing diverse and varied construction projects. Today, the company has technology, state of the art equipment as well as team of 750-1000 efficient manpower working to get to the minute details of your needs. It has been licensed to work on and construct projects of unlimited floor area of G+12 floors in Dubai and Abu Dhabi

Having been acknowledged for our quality service and prompt delivery, CHC Building Contracting LLC has grown to become an indispensable part of the construction field. By setting standards for many structures, and RCC buildings in particular, our work speaks for the wide range of proficient construction our company offers.

We are sufficiently outfitted to successfully undertake construction of RCC and steel buildings on turnkey basis, be it residential or commercial purpose ones. We are fully qualified to complete and deliver projects to client's specifications within given time constraints. From the past and present experience, our clients know that CHC ensures quality in all its work. Our company prides itself in keeping compliance with many globally accepted quality and other standards including ISO9001, ISO14001, OHSAS 45001 Trakhees guidelines and various other regional regulations.

Our reputation for excellence bases heavily on prompt delivery of completed projects on time and within budget. CHC is extremely proud of its steady growth across the region.

**Our comprehensive team has constructed various projects with modern technology and panache. This makes us one of the leading trailblazers in the construction industry. Our high standards, that include integrity, quality and efficiency, have resulted in us being recognized as one of the valued contracting firms in the region.**





Ensuring quality materials are used and completing projects on time are the keys to a client's satisfaction, which is why we work tirelessly to provide quality work at competitive rates. CHC is headed by our MD, who has relentlessly encountered market trends for more than two decades. CHC is ostentatiously going ahead of its competitors in the construction industry, and we pay great attention to continuous innovation and market needs. Our reputation is based on firm belief that every client has the right to quality infrastructure at all times as well as incorporating elegance to their needs.

CHC's project delivery system is devised to provide contemporary and flexible solutions to any project awarded to us. With an emphasis laid on quality, particular attention is paid to details, with a generalised and specific focuses to meet international standards and requirements. This has cemented the way to further success, growth and developed structured thinking to approach each task in the right way.

**CHC's strategy is to execute projects efficiently with precision, keeping client's needs on top of everything.**



# Our Services

CHC's expertise is in accurately executing large and complex building construction projects. We are proficient in handling diverse construction projects such as

Factories and warehouses,

Residential and commercial buildings,

Staff and labour accommodation,

Hotels, buildings for hospitals

Educational institutions,

Parking buildings,

Shopping malls and cinemas,

Showrooms and service centres,

State of the art villas.

Our proven track record of delivering various Civil and Steel projects as scheduled and within budget secures us a credible rank in the industry. Our competitive and experienced professionals make best use of new developments in the construction industry to our client's advantage. Our unique and progressive expertise capture and expertise utilisation systems make us a preferred construction partner in the region.



سي اتش سي لمقاولات البناء ش.ذ.م.م  
**CHC Building Contracting L.L.C**

## Our Services

Building sophisticated civil structures is CHC's one of the core areas of expertise. This expertise in supreme quality civil structures, which is the backbone of any construction work, shields and shelters our clients with confidence. Our commitment to handle any complicated projects from any site conditions is intended to surpass client's expectations in quickly completing the construction process. Our highly talented project managers backed by the exceptional strategy and vision of top management always ensure all expectations of the stakeholders are accurately addressed with highest standards and care. This dedication has resulted in many exemplary buildings and brought CHC to the forefronts of construction industry in UAE.

As a leading contractor of turnkey projects, we combine expertise from many streams into excellent infrastructures. Mastery in broad range of attractive, high quality cladding works is one of such expertise which clients always choose us for. We have completed many projects with attractive, innovative and high safety cladding works.

CHC is also capable to execute many kinds of roofing such as general warehouses, public utilities and multipurpose developments. We are armed to completely install most difficult and comprehensive designs of roof and wall cladding systems.



In CHC's definition, completion of a project is not just completion of its structure. It is also committed to make sure that the surroundings of the building are also developed to the standards of our high quality buildings. Hence, as part of projects, we also undertake premium landscaping including, but not limited to, planting & design, irrigation, paving stones, wood works and natural stone works.

## Our Team



سي اتش سي لمقاولات البناء ش.ذ.م.م  
CHC Building Contracting L.L.C



CHC stands firm on the solid foundation laid by the Board of Directors. Their ultimate direction, strategic supervision and consistent, dynamic dedication steers the company into heights. Their proven willingness to contribute to the good of all stakeholders keeps CHC's progressing.

Our senior management team's collaborative working style with those charged with governance emphasises teamwork, commitment and trust with governing body.



**Mr. Hassan Hammoud**  
Chairman and MD

CHC is steered under the mighty wings of Hassan Hammoud, Chairman and Managing Director of the company. Ever since the company was launched in 2004, he aims and strives to make CHC a forefront runner in the UAE's construction industry. He transmits his energy and passion to each one and gains flawless performance in return. He ensures cutting edge functioning of the board by overseeing its effectiveness and operation. His graduation in engineering, knowledge of market pulse for about two decades and his brilliant commercial acumen makes CHC better day by day.

## Our Team



سي اتش سي لمقاولات البناء ش.ذ.م.م  
CHC Building Contracting L.L.C

Together, with individual valuable contributions, CHC maintains a pragmatic drive for actions and a passion for true excellence. CHC's energetic team of engineering, management, human resources and finance professionals with their rich experience and knowledge guides and directs the company towards the vision set by the board.. This spirit and pool of resources help CHC surpass client's expectations.

### **Mrs. Buthaina Hammoud** Director

The triumph of our company is being shaped by our guiding light, Buthaina Hammoud, Director. She graduated with a bachelor degree in finance and administration. With more than 20 years of experience and clarity of direction in administering big companies, she always keeps CHC on the right track.

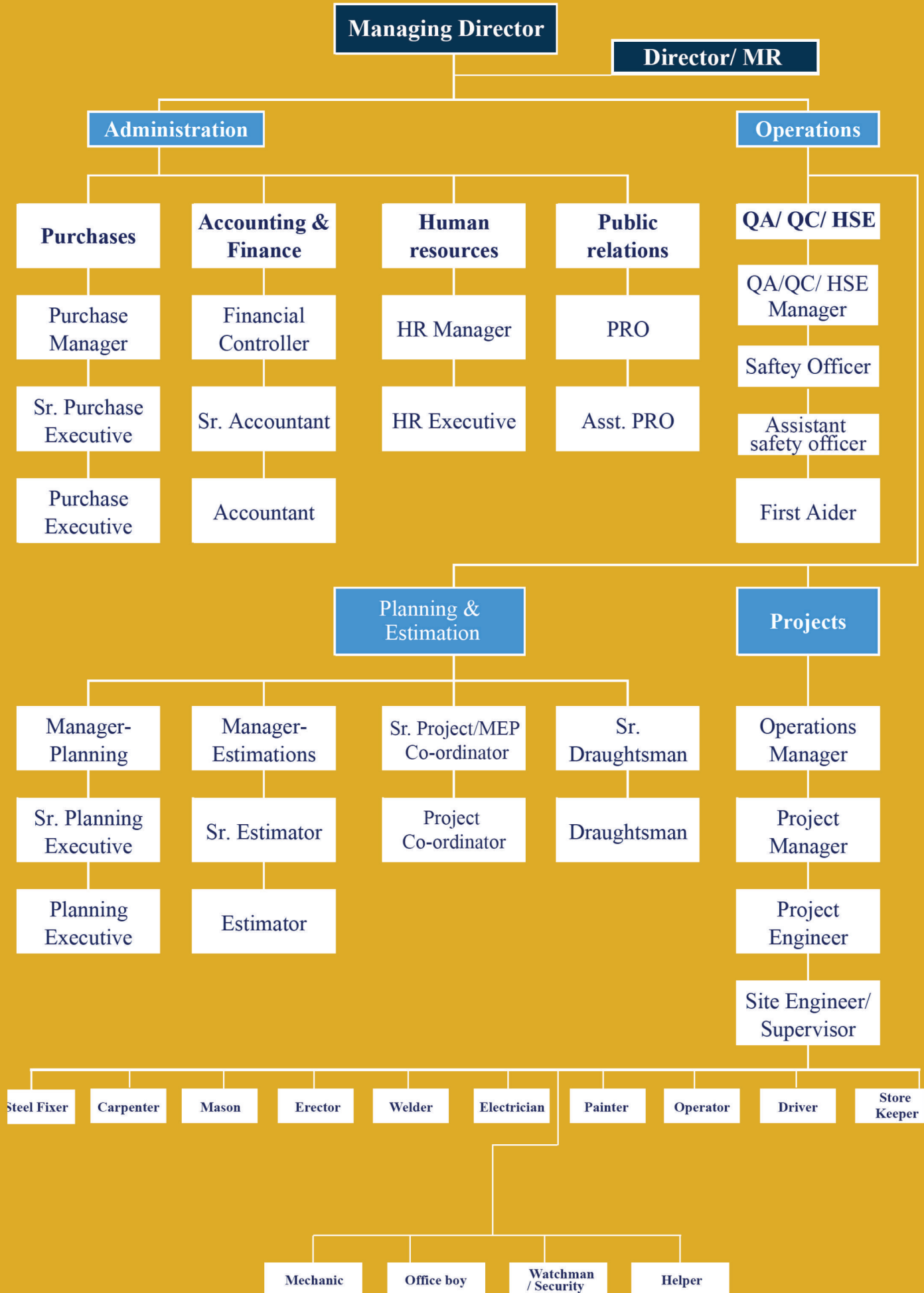
Her consistency, commitment and high standards of integrity inspire everyone dealing with her to deliver best results. With an attitude to stand unwavering in pursuit of goals and an eye for innovation, she constantly challenges the status quo for improvements.



The success of any company, especially a construction company, has massive dependence on performance of its work force. In its policies, CHC always gives due consideration to this fact and enlists terms to ensure its work force is talented, trained and motivated. CHC prides itself of having an energetic work force of 750-1000 employees on rolls, who are capable of and willing to meet all challenging requirements of clients.

The constant guidance of senior management together with consistent hard work of every employee ensures that CHC's quest to achieve top-tier performance in construction field is met. Individual attention and encouragement at all levels makes CHC Building Contracting LLC a great place to work.

# Organisation Chart





سي اتش سي لمقاولات البناء ش.ذ.م.م  
CHC Building Contracting L.L.C

QHSE

## Care for Quality, Health & Safety, Environment..

CHC's commitment to deliver quality services all the time, to ensure health & safety of everyone and to protect the environment is recognised by ISO 9001, ISO 14001 and OHSAS 45001 certificates. This commitment brings excellence in CHC's construction services through;

- Improving our organization continually and complying with applicable quality, safety and environmental legislations and policies.
- Delivering quality and timely services at all times to meet all needs of customers, thereby ensuring customer satisfaction.
- Reducing environmental aspects and impacts within and outside the company.
- Preventing ill health, incidents and other hazards within and outside the company.
- Making all employees responsible for delivering projects against the requirements in a safe manner and with commitment to the environment protection.

**CHC will continue to stand firm on the confidence of our clients set by this clear vision on quality, health and safety, and environment.**





## Corporate Social Responsibility

CHC's business practices have always involved initiatives that benefit society. We encourage our professionals to use their business skills keeping social good in mind. Initiatives that benefit our society are embedded in CHC's policies and practices. We also believe that our responsibility towards society begin from our immediate periphery.

The energy that we transmit to the next layer keeps spreading into larger circles and results in social and environmental wellbeing on a larger scale. CHC showcases its responsibility through honesty, transparency and by doing its business in an amicable way. This gives a great positive energy to CHC's journey in its way forward.

**CHC IS COMMITTED TO ADD NEW DIMENSIONS  
TO THE WORLD OF CONSTRUCTION**



# List of Tools & Machineries

CHC has a wide variety of machinery required for its operations. Our logistics department manages a wide range of fleet of commercial and industrial machines, busses, cars, pick-ups, cranes, bulldozers, many kinds of lifts, generators etc to ensure rapid work progress at our site.

Large fleet of heavy equipment are hired from quality hirers on need basis. Regular safety checks and routine maintenance are undertaken for both own as well as hired machines to ensure safety, efficiency, and smooth operation. Following is a list of own heavy equipment.

SN	DESCRIPTION	QUANTITY
1	Bus 84 Seats	6 NOS
2	Bus 82 Seats	3 NOS
3	Bus 71 Seats	1 NOS
4	Mini Bus	3 NOS
5	Pick up	8 NOS
6	Tipper truck	1 NOS
7	Diesel tanker	1 NOS
8	Cars	17 NOS
9	JCB	5 NOS
10	Boom loader	9 NOS
11	Man lift	1 NOS
12	Rollers	3 NOS
13	Vibrators	5 NOS
14	Generators- Big	4 NOS
15	Generators- Small	4 NOS
16	Tower Cranes	3 NOS

## Villas & Residential Buildings



سي اتش سي لمقاولات البناء ش.ذ.م.م  
CHC Building Contracting L.L.C

Sl	Project No	Project description	Clients	Consultant	Project value
1	J-170	Residential Building (B+G+4)	Mr. Khalid Ahmed Qasem Al Khatib	M/s. Art Consultants	49,000,000 AED
2	J-149	B+G+4 Residential Building	Mr. Khalid Ahmed Qasem Al Khatib	Orion Engineering Consultants	29,168,573 AED
3	J-182	(B+G+1+HC) Residential Building	Dubai Center for Special Needs	Abdul Rahim Engineering Consultants	12,000,000 AED
4	J-192	G+1 Townhouse Villa	J & H Properties LLC	Corporate Planners Engineering Consultant	5,816,257 AED
5	J-193	B+G+1 Villa	Hassan El Amil	NEAT Architects & Engineers	5,750,000 AED
6	J-187	G+1 Residential Townhouse	Fairweather Trading Limited	Corporate Planners Engineering Consultant	5,500,000 AED
7	J-166	B+G+1 Villa (Civil Work Only)	Mr. Mohammad Ahmad Khalfan Ahmad Al Ghaith	Pioneers of Experts Engineering Consultants	4,400,000 AED
8	J-134	Modification Works of H.H. Sheikh Abdullah Bin Zayed Al Nahyan's Villa	Royal Group UAE	Adnan Saffarini Engineering Consultants	4,093,597 AED
9	J-197	B+G+1 Villa	Mr. Daulet Nurzhanov & Mrs. Dinar Kabylbekova	Jouzy Consulting Engineers	3,500,000 AED
10	J-194	Proposed Addition of Majlis Block & Swimming Pool Block	Mr. Tarek Mohammed Al Falasi	MEMA Middle East Modern Architecture	7,422,926 AED
11	J-183	B+G+1+Roof Villa	Ms. Ayesha Abdulla Khalifa	Abdul Rahim Engineering Consultants	3,150,000 AED
12	J-191	G+1 Townhouse Villa	Mr. Tariq Saqer Ali Juma Bin Ghalaita	Corporate Planners Engineering Consultant	2,350,000 AED

## Staff & Labour Accommodations

Sl	Project No	Project description	Clients	Consultant	Project value
1	J-177	(B+G+4+R) Labour Accommodation	Full Circle Technical Services LLC	M/s. Al Ajmi Engineering Consultants	36,500,000 AED
2	J-171	(B+G+4+R) Accommodation	Mr. Khalid Ahmed Qasem Al Khatib / NAFFCO	M/s. Modular Design	18,000,000 AED
3	J-154	G+4 Labour/Staff Accommodation	NAFFCO FZCO	Orion Engineering Consultants	17,653,500 AED
4	J-150	G+4 Labour/Staff Accommodation	Al Fanar Electric LLC	Orion Engineering Consultants	16,763,527 AED
5	J-146	G+4 Labour Accommodation	CHC Building Contracting LLC	Corporate Planners Engineering Consultants	15,254,430 AED
6	J-160	B+G+4 Staff Accommodation	CHC Building Contracting LLC	Corporate Planners Engineering Consultants	15,000,000 AED
7	J-148	G+2 Labour Accommodation	Al Saeedi Middle East FZCO	Corporate Planners Engineering Consultants	12,731,600 AED
8	J-137	G+4 Labour Accommodation	NAFFCO FZCO	Orion Engineering Consultants	11,602,000 AED

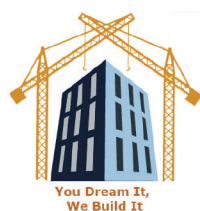
## Office & Services Buildings



سي اتش سي لمقاولات البناء ش.ذ.م.م  
CHC Building Contracting L.L.C

Sl	Project No	Project description	Clients	Consultant	Project value
1	J-190	Bur Dubai Police Station	Dubai Police General HQ	Jouzy Axianta International	90,900,000 AED
2	J-188	Data Hub Facilities Bldg 1 & 2	Gulf Data Hub	Royal Bureau Engineering Consultants	56,784,025 AED
3	J-186	G+2 Data Center Facilities – Phase 1 & 2	Gulf Data Hub	Kaizen Architects & Engineers	34,241,314 AED
4	J-168	Detention Center	Dubai Police General H.Q.	Eng. Adnan Saffarini Office Architects & Engineering Consultants	29,850,000 AED
5	J-175	B+G+1 Police Station	Dubai Police General H.Q.	M/s. Al Ajmi Engineering Consultants	26,830,050 AED
6	J-180	Lehbab Police Station	Dubai Police General Headquarters	Adnan Saffarini Engineering Consultants	26,600,000 AED
7	J-115	Phase 2: Office Building block and substation	National Engineering Group	Orion Engineering Consultant	23,575,300 AED
8	J-196	G+2 Data Center	Gulf Data Hub	MEMA Middle East Modern Architecture	23,460,000 AED
9	J-189	Data Hub Facilities Bldg 1 (Phase-1)	Gulf Data Hub	Royal Bureau Engineering Consultants	23,406,798 AED
10	J-113	G+M Office and G+M Service Block, Battery Recycling Factory Shed, Workshop	Unique Metal Technologies FZCO	Al Jassim Engineering Consultants	21,000,000 AED
11	J-118	Office, substation, Guardhouse, GRC Factory	Terrazzo Ltd,	Orion Engineering Consultants	18,250,000 AED
12	J-165	Addition to Research Center Building (G+1 Multipurpose Hall)	Dubai Police General H.Q.	Eng. Adnan Saffarini Office Architects & Engineering Consultants	16,350,000 AED
13	J-116	Office & Warehouse Facility	Walls & Floors M.E. FZCO	Orion Engineering Consultants	9,913,428 AED
14	J-101	Office, Service Block and Factory	Techniq International FZE	Orion Engineering Consultants	8,674,892 AED
15	J-181	G+3+R Office Building GDH1 Data Centre	Gulf Data Hub FZCO	Abdul Rahim Engineering Consultants	8,400,000 AED
16	J-143	Civil Works for Pot Delining Building	Tiger Steel Engineering LLC	TS Engineering team	5,717,751 AED
17	J-178	Dubai Police Smart Centre called Sub-Urban Points at various areas in Dubai	Dubai Police General H.Q.	M/s. Corporate Planners Engineering Consultants	4,998,800 AED
18	J-185	DEWA Mushrif 33KV Substation	Jazeera Emirates Power	Engineering Consultants Group	1,766,500 AED

# Warehouses and Factories



سي اتش سي لمقاولات البناء ش.ذ.م.م  
CHC Building Contracting L.L.C

Sl	Project No	Project description	Clients	Consultant	Project value
1	J-151	Factory buildings 1&2	NAFFCO FZCO	Orion Engineering Consultants	57,357,250 AED
2	J-115	Phase 1: Warehouse (1, 2 & 3), Open Gantry Crane & Service Block  Phase 3: Additional shed and G+M service block  Phase 4: Warehouse No-4	National Engineering Group	Orion Engineering Consultants	42,942,700 AED
3	J-140	Factory Building No. 1 & 2, Service Block & Guard House	NAFFCO FZCO	Orion Engineering Consultants	35,520,000 AED
4	J-145	Gold refinery factory building	Al Etihad Gold Refinery- DMCC	Adnan Saffarini Engineering Consultant	19,538,975 AED
5	J-169	Construction of Factory, Open Shed, Office, Service Blocks	NAFFCO FZCO.	M/s. Chawla Architectural & Consulting Engineers	15,500,000 AED
6	J-172	Warehouse & G+M Office	NAFFCO FZCO.	M/s. Al Jassim Engineering Consultants	8,000,000 AED
7	J-173	Construction of Factory Extension	NAFFCO FZCO.	M/s. Orion Engineering Consultants	6,200,000 AED
8	J-176	G+M Warehouse & Office	CHC Building Contracting LLC	M/s. Corporate Planners Engineering Consultants	9,500,000 AED
9	J-152	Warehouse (Ground Only)	Mr. Abdulla Mattar Khamis Al Mezaina	Abdul Rahim Architectural Consultants	5,970,000 AED
10	J-161	G+M Shed	Mr. Mohammad Ahmad Khalfan Ahmad Al Ghaith	Abdul Rahim Architectural Consultants	5,830,000 AED
11	J-158	G Only Storage Shed	Mr. Khamis Mattar Khamis Al Mezaina Al Muhairi	Abdul Rahim Architectural Consultants	5,750,000 AED
12	J-147	Fabrication and storage facilities	ACE ACTG FZCO	Orbit Engineering Consultants	5,431,868 AED
13	J-162	B+G+M Shed	Mr. Sultan Ahmad Khalfan Al Gaith Al Marri	Abdul Rahim Architectural Consultants	5,000,000 AED
14	J-153	G only Warehouse	Heirs of Mattar Khamis Al Mezaina	Abdul Rahim Architectural Consultants	4,430,000 AED
15	J-144	Additional Warehouse	Techniq International FZE / SFECO Global	Orion Engineering Consultant	4,021,736 AED
16	J-159	Workshop Extension, Storage, Substation and Guard Room	SFFECO Global FZE	Orion Engineering Consultant	2,900,000 AED
17	J-179	G+M Warehouse	Dubai Fishermen Cooperative Association	Abdul Rahim Architectural Consultants	10,500,000 AED

# Project Details



سي اتش سي لمقاولات البناء ش.ذ.م.م  
CHC Building Contracting L.L.C



## Bur Dubai Police Station

Project Description	: Bur Dubai Police Station
Client's Name	: Dubai Police General HQ
Project Location	: Plot 323-423 – Dubai, UAE
Consultant	: Jouzy Axianta International
Value Of Project	: 90,900,000 AED
Build-Up Area	: 21,463.11 SQ Meter

# Project Details



سي اتش سي لمقاولات البناء ش.ذ.م.م  
CHC Building Contracting L.L.C

## National Engineering Group

Project Description	: Phase 1, 2, 3, 4 : Warehouse (1, 2 & 3), OpenGantry Crane & ServiceBlock
Client's Name	: National Engineering Group
Project Location	: Plot No. S10201, Jebel Ali Free Zone, Dubai
Consultant	: Orion Engineering Consultant
Value of Project	: 66,518,000 AED
Built Up Area	: 59,660 Square Meters





سي اتش سي لمقاولات البناء ش.ذ.م.م  
CHC Building Contracting L.L.C

## Project Details



### DUBAI POLICE

Project Description	: Detention Center
Client's Name	: Dubai Police General H.Q
Project Location	: Plot No. 671-1429, Al Barsha, Dubai
Consultant	: Adnan Saffarini Office Architects & Engineering Consultants
Value of Project	: 29,850,000 AED
Built Up Area	: 4440.26 sqm

# Project Details



سي اتش سي لمقاولات البناء ش.ذ.م.م  
CHC Building Contracting L.L.C

## G+2 DATA CENTER

Project Description	: G+2 Data Center Facilities – Phase 1 & 2
Client's Name	: Gulf Data Hub
Project Location	: Plot 29-006 Dubai Silicon Oasis – Dubai, UAE
Consultant	: Kaizen Architects & Engineers
Value Of Project(Phase 1&2 )	: 34,241,314 AED
Build-Up Area	: 16,083.50 SQ Meter







سي اتش سي لمقاولات البناء ش.ذ.م.م  
CHC Building Contracting L.L.C

## Project Details



### DUBAI POLICE

Project Description	: B+G+1 Police Station
Project location	: Plot No. 2827474, Al Khawaneej Second, Dubai
Client's name	: Dubai Police General H.Q
Consultant	: Al Ajmi Engineering Consultants
Value of project	: 26,830,050 AED
Built-up area	: 4096.64 sqm

# Project Details



سي اتش سي لمقاولات البناء ش.ذ.م.م  
CHC Building Contracting L.L.C

## Gold Refinery Factory

Project Description	: Gold refinery factory building
Client's Name	: Al Etihad Gold Refinery- DMCC
Project Location	: Plot No: 591-6633, DMCC, Dubai
Consultant	: Engr. Adnan Saffarini Engineering Consultant
Value of Project	: 19,538,975 AED
Built Up Area	: 4648 sqm



# Project Details



سي اتش سي لمقاولات البناء ش.ذ.م.م.  
CHC Building Contracting L.L.C



## DUBAI POLICE

Project Description	: Lehabab Police Station
Client's Name	: Dubai Police General Headquarters
Project Location	: Plot 831-225 Al Lehabab 2nd, Dubai
Consultant	: Adnan Saffarini Engineering Consultants
Value of Project	: 26,600,000 AED
Built Up Area	: 45,646 sqm

# Project Details



سي اتش سي لمقاولات البناء ش.ذ.م.م  
CHC Building Contracting L.L.C

## Residential Building

Project Description	: (B+G+1+HC) Residential Building
Client's Name	: Dubai Center for Special Needs
Project Location	: Plot No. 343-0441 Al Wasl, Dubai-UAE
Consultant	: Abdul Rahim Engineering Consultants
Value of Project	: 12,000,000 AED
Built Up Area	: 37,733.37 sqm





سي اتش سي لمقاولات البناء ش.ذ.م.م.  
CHC Building Contracting L.L.C

# Project Details



## Residential Building (B+G+1)

Project Description	: B+G+1+Roof Villa
Client's Name	: Ms. Ayesha Abdulla Khalifa
Project Location	: Plot No. 282-0390 Al Khawaneej 2nd, Dubai – UAE
Consultant	: Abdul Rahim Engineering Consultants
Value of Project	: 3,150,000 AED
Built Up Area	: 20,207.53 sqm

# Project Details



سي اتش سي لمقاولات البناء ش.ذ.م.م  
CHC Building Contracting L.L.C

## Government Of Dubai

Project Description	: G+M Warehouse for Dubai Fishermen Cooperative Association (Factory)
Client's Name	: Govt. of Dubai - Dubai Real Estate Corp.
Project Location	: Plot No. 811-1907, Al Warsan Third, Dubai
Consultant	: Abdul Rahim Architectural Consultants
Value of Project	: 10,500,000 AED
Built Up Area	: 7,843.61 sqm





سي اتش سي لمقاولات البناء ش.ذ.م.م  
CHC Building Contracting L.L.C

## Project Details



### Residential Building (B+G+4)

Project Description	: B+G+4 Villa
Client's Name	: Mr. Khalid Ahmed Qasem Al Khatib
Project Location	: Plot No. 681-1011 (JVC10SMRP200), Al Barsha South 4th
Consultant	: Art Consultants
Value of Project	: 49,000,000 AED
Built Up Area	: 17760.32 sqm

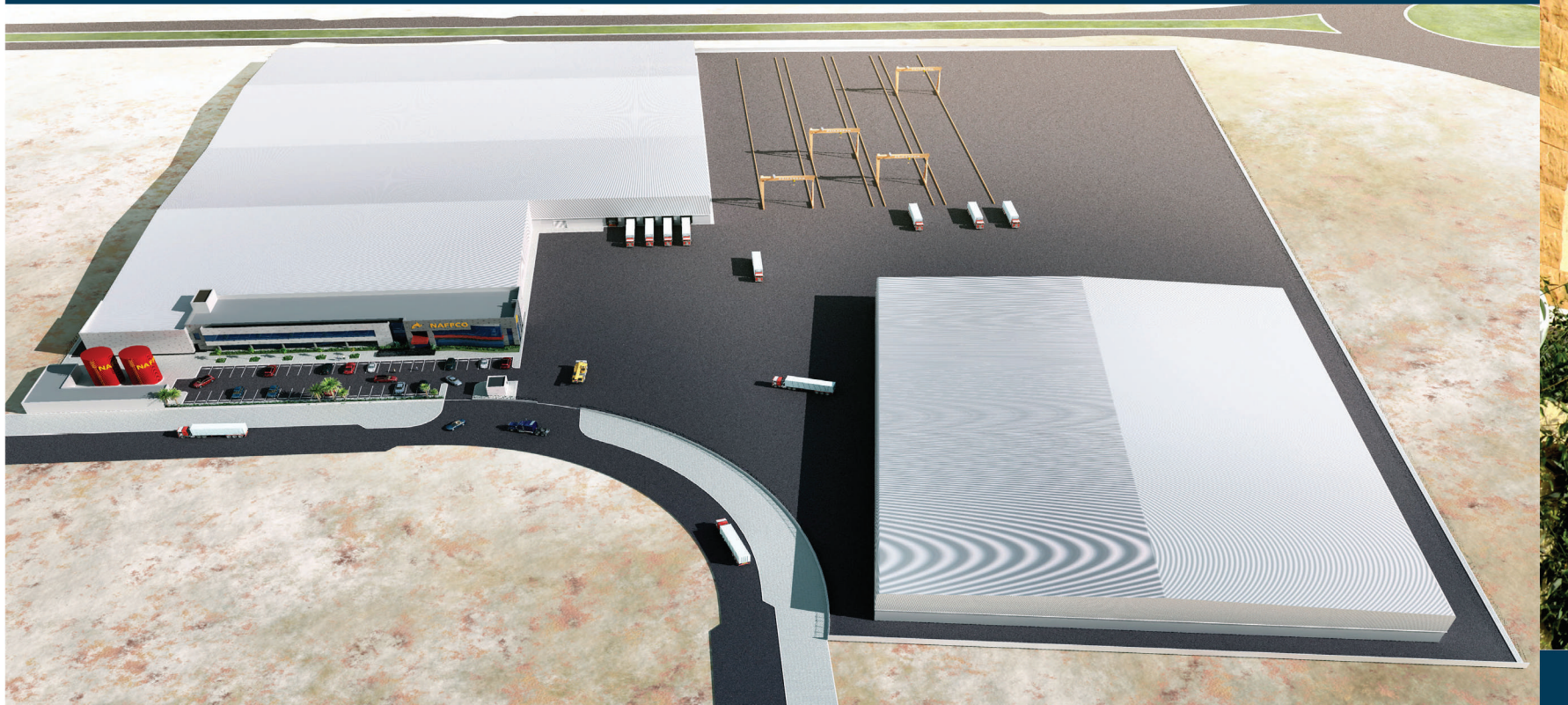
# Project Details



سي اتش سي لمقاولات البناء ش.ذ.م.م  
CHC Building Contracting L.L.C

## Factory Buildings 1&2

Project Description	: Factory buildings 1&2
Client's Name	: NAFFCO FZCO
Project Location	: Plot No. S30904, Jebel Ali Free Zone, Dubai
Consultant	: Orion Engineering Consultants
Value of Project	: 57,357,250 AED
Built Up Area	: 50993 sqm







سي اتش سي لمقاولات البناء ش.ذ.م.م  
CHC Building Contracting L.L.C

## Project Details



### G+1 Residential Townhouse

Project Description	: G+1 Residential Townhouse (6 Units)
Client's Name	: Fairweather Trading Limited
Project Location	: Plot No. AFWATH055, Jebel Ali 1st – Dubai, UAE
Consultant	: Corporate Planners Engineering Consultant
Value Of Project(Phase 1&2 )	: 5,500,000 AED
Build-Up Area	: 1,727.00 SQ Meter

# Project Details



سي اتش سي لمقاولات البناء ش.ذ.م.م  
CHC Building Contracting L.L.C

## Data Hub

Project Description	: Data Hub Facilities Bldg. 1 & 2
Client's Name	: Gulf Data Hub
Project Location	: Plot 28SR35 ICAD-III, Abu Dhabi, UAE
Consultant	: Royal Bureau Engineering Consultants
Value Of Project(Phase 1&2 )	: 56,784,025 AED
Build-Up Area	: 38,143.64 SQ Meter





سي اتش سي لمقاولات البناء ش.ذ.م.م  
CHC Building Contracting L.L.C

## Project Details



### G+4 Staff Accommodation

Project Description	: G+4 Staff Accommodation
Client's Name	: Al Fanar Electric LLC
Project Location	: Plot No.598-1247, DIP, Dubai
Consultant	: Orion Engineering Consultants
Value of Project	: 16,763,527 AED
Built Up Area	: 4241 sqm

# Project Details



سي اتش سي لمقاولات البناء ش.ذ.م.م  
CHC Building Contracting L.L.C

## B+G+4 Staff Accommodation

Project Description	: B+G+4 Staff accommodation
Client's Name	: CHC Building Contracting LLC
Project Location	: Plot No. 5131440, Shuaib, Jebel Ali, Dubai
Consultant	: Corporate Planners Engineering Consultants
Value of Project	: 15,000,000 AED
Built Up Area	: 4829 sqm





سي اتش سي لمقاولات البناء ش.ذ.م.م  
CHC Building Contracting L.L.C

## Project Details



### Factory, Open Shed, Office and Service Blocks

Project Description	: Factory, Open Shed, Office and Service Blocks
Client's Name	: NAFFCO FZCO
Project Location	: Plot No. S10201A, JAFZA, Dubai
Consultant	: Chawla Architectural & Consulting Engineers
Value of Project	: 15,500,000 AED
Built Up Area	: 12175.35 sqm

# Project Details



سي اتش سي لمقاولات البناء ش.ذ.م.م  
CHC Building Contracting L.L.C

## (B+G+4+R) Accommodation

Project Description	: (B+G+4+R) Accommodation
Client's Name	: Mr. Khalid Ahmed Qasem Al Khatib / NAFFCO
Project Location	: Plot No. 599-2221, Jebel Ali Industrial 1st
Consultant	: Modular Design
Value of Project	: 18,000,000 AED
Built-up area	: 7567.48 sqm



# Project Details



سي اتش سي لمقاولات البناء ش.ذ.م.م  
CHC Building Contracting L.L.C



## B+G+1 Villa

Project Description	: B+G+1 Villa
Client's Name	: Mr. Daulet Nurzhanov & Mrs. Dinar Kabyzbekova
Project Location	: Al Barari Fountain Drive BA-R-010, Dubai, UAE
Consultant	: Jouzy Consulting Engineers
Value Of Project(Phase 1&2 )	: 3,500,000 AED
Build-Up Area	: 1,700.00 SQ Meter

# Project Details



سي اتش سي لمقاولات البناء ش.ذ.م.م  
CHC Building Contracting L.L.C

## (B+G+4+R) Labour Accommodation

Project Description	: (B+G+4+R) Labour Accommodation
Client's Name	: Full Circle Technical Services LLC
Project Location	: Plot No. JID.E.017, Jebel Ali Industrial 1st, Dubai
Consultant	: Al Ajmi Engineering Consultants
Value of Project	: 36,500,000 AED
Built-up area	: 17157.55 sqm





# Project Details



سي اتش سي لمقاولات البناء ش.ذ.م.م  
CHC Building Contracting L.L.C



## Labour / Staff Accommodation

Project Description	: G+4 Labour/Staff Accommodation
Client's Name	: NAFFCO FZCO
Project Location	: Plot No. 597-295, DIP-II, Dubai
Consultant	: Orion Engineering Consultant
Value of Project	: 17,653,500 AED
Built-up area	: 7097 sqm

# Project Details



سي اتش سي لمقاولات البناء ش.ذ.م.م  
CHC Building Contracting L.L.C

## Labour Accommodation

Project Description	: G+4 Labour Accommodation
Client's Name	: NAFFCO FZCO
Project Location	: Plot No. 597-682, DIP-II, Dubai
Consultant	: Orion Engineering Consultant
Value of Project	: 11,602,000 AED
Built Up Area	: 7,060 Square Meters



# Project Details



سي اتش سي لمقاولات البناء ش.ذ.م.م  
CHC Building Contracting L.L.C



## INDUSTRIES (Warehouse/Factory)

Project Description	: GRC Factory, Office, Substation & Guard House
Client's Name	: Terrazzo Dubai Co.
Project Location	: Plot 533-193, DIC – Dubai, UAE
Consultant	: Orion Engineering Consultant
Value of Project	: 18,250,000 AED
Built Up Area	: 8,261.51 sqm

# Project Details



سي اتش سي لمقاولات البناء ش.ذ.م.م.  
CHC Building Contracting L.L.C

## G+M Office and G+M Service Block

Project Description	: Battery Recycling Factory Shed, Workshop
Client's Name	: Unique Metal Technologies FZCO
Project Location	: Plot No. S 20410, Jebel Ali Free Zone, Dubai
Consultant	: Al Jassim Engineering Consultants
Value of Project	: 21,000,000 AED
Built Up Area	: 6,670 Square Meters



# Project Details



سي اتش سي لمقاولات البناء ش.ذ.م.م  
CHC Building Contracting L.L.C



## Labour Accommodation

Project Description	: G+2 Labour Accommodation
Client's Name	: Al Saeedi Middle East FZCO
Project Location	: Plot No. 597-293, DIP, Dubai
Consultant	: Corporate Planners Engineering Consultants
Value of Project	: 12,731,600 AED
Built Up Area	: 4358 sqm

# Project Details



سي اتش سي لمقاولات البناء ش.ذ.م.م  
CHC Building Contracting L.L.C

## G+M Shed

Project Description	: G+M Shed
Client's Name	: Mr. Mohammad Ahmad Khalfan Ahmad Al Ghaith
Project Location	: Plot No. 811-208, Al Warsan 3rd, Dubai
Consultant	: Abdul Rahim Architectural Consultants
Value of Project	: 5,830,000 AED
Built Up Area	: 3879 sqm



# Project Details



سي اتش سي لمقاولات البناء ش.ذ.م.م  
CHC Building Contracting L.L.C



## B+G+1 Villa

Project Description	: B+G+1 Villa
Client's Name	: Mr. Mohammad Ahmad Khalfan Ahmad Al Ghaith
Project Location	: Plot No. 615-0260, Nadd Al Shiba 2nd, Dubai
Consultant	: Pioneers of Experts Engineering Consultants
Value of Project	: 4,400,000 AED
Built Up Area	: 3063 sqm

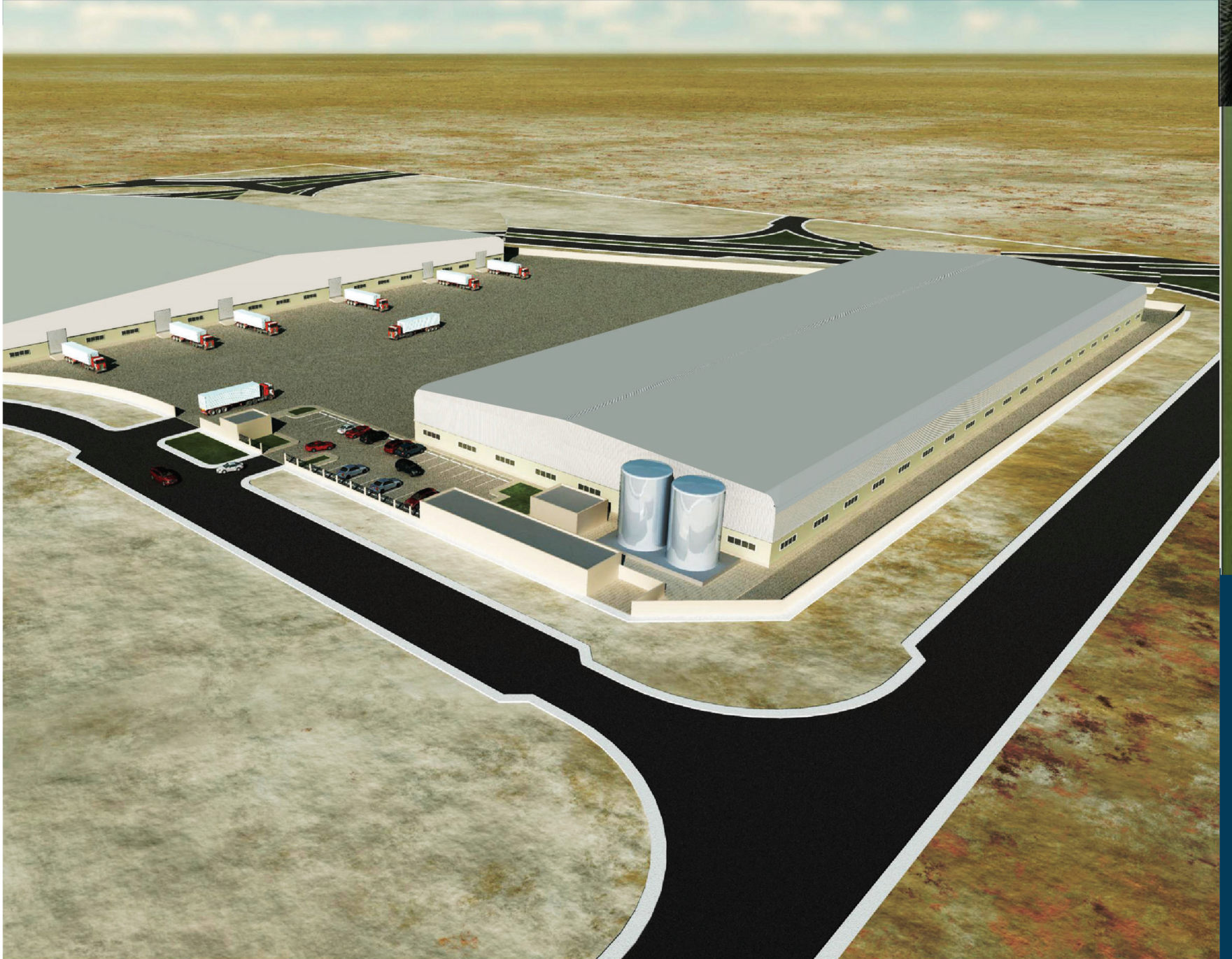
# Project Details



سي اتش سي لمقاولات البناء ش.ذ.م.م  
CHC Building Contracting L.L.C

## NAFFCO FZCO

Project Description	: Factory Building No. 1 & 2 , Service Block & Guard House
Client's Name	: NAFFCO FZCO
Project Location	: Plot No. S30201, Jebel Ali Free Zone, Dubai
Consultant	: Orion Engineering Consultants
Value of Project	: 35,520,000 AED
Built Up Area	: 33,435 Square Meters





# COMPANY TRADE LICENSE (DUBAI)



## رخصة تجارية Commercial License

### تفاصيل الرخصة / License Details

License No.	561114	رقم الرخصة
Company Name	C H C BUILDING CONTRACTING L.L.C	اسم الشركة
Trade Name	C H C BUILDING CONTRACTING L.L.C	الإسم التجاري
Legal Type	Limited Liability Company(LLC)	الشكل القانوني
Expiry Date	04/09/2023	تاريخ الإصدار
D&B D-U-N-S ®	534555628	رقم الرخصة الام
Register No.	69747	عضوية الغرفة

### الاطراف / License Members

Share / الحصة	Role / الصفة	Nationality / الجنسية	Name / الإسم	No./ الشخص
	Manager / مدير	Commonwealth of Dominica دومينيكا دول الكومنولث	حسن حمود HASSAN HAMMOUD	1034613

### نشاط الرخصة التجارية / License Activities

Building Contracting	مقاولات البناء
Steel Constructions Contracting	مقاولات تشييد الانشاءات المعدنية

### العنوان / Address

Phone No	971-04-4508661	تليفون	P.O. Box	49211	صندوق بريد
Fax No	971-04-4508626	فاكس	Parcel ID	621-0	رقم القطعة
Mobile No	971-50-5587298	هاتف متحرك		803/804 ملك حسن امين حمود - برديي - ورسان 1	مكتب رقم

### البريد الإلكتروني / Email

### الملاحظات / Remarks

مقاولات البناء (G+12)  
مقاولات تشييد الانشاءات المعدنية  
(ارضي + اول). تم تغير الاسم التجاري 24/7/2016

Print Date 13/12/2021 12:24 تاريخ الطباعة Receipt No. 14179986 رقم الإيصال



الإمارات  
THE EMIRATES

يمكنك الآن تجديد رخصتك التجارية من خلال الرسائل النصية القصيرة، أرسل رقم الرخصة إلى 6969 (دو/اتصالات) للحصول على إذن الدفع.  
Now you can renew your trade license by sending a text message (SMS). Send your trade license number to 6969 (Du/ Etisalat) to receive payment voucher.

Get FREE access to Zoho One for the first year  
احصل على زوهو ون مجاناً للسنة الأولى  
Zoho.com/ded



وثيقة إلكترونية معتمدة وصادرة بدون توقيع من دائرة الاقتصاد والسياحة في دبي. لمراجعة صحة البيانات الواردة في الرخصة برجاء زيارة الموقع  
www.dubaied.gov.ae  
Approved electronic document issued without signature by the Department of Economy & Tourism in Dubai. To verify the license kindly visit www.dubaied.gov.ae

# COMPANY TRADE LICENSE (ABU DHABI)

مركز أبوظبي للأعمال  
Abu Dhabi Business Center



دائرة التنمية الاقتصادية  
DEPARTMENT OF ECONOMIC DEVELOPMENT



## Commercial License

Emerging Economic Establishment

## رخصة تجارية

منشأة اقتصادية ناشئة

License No	:	CN-3847785	:	رقم الرخصة
ADCCI No	:	10016777	:	عضوية الغرفة
Establishment Card MOHRE	:	1171212	:	وزارة الموارد البشرية والتوطين بطاقة المنشأة
Establishment Card ICA	:	748027	:	الهيئة الاتحادية للهوية والجنسية - بطاقة المنشأة
Legal Form	:	UAE Branch - Dubai	:	فرع اماراتية - دبي
Trade Name	:	C H C BUILDING CONTRACTING - BRANCH OF ABU DHABI 1	:	اسم التجاري
Establishment Date	:	17/12/2020	:	تاريخ تأسيس المنشأة
Issue Date	:	16/12/2022	:	تاريخ الإصدار
Expiry Date	:	16/12/2023	:	تاريخ الإنتهاء

الصلة Role	الجنسية Nationality	الملاك / الشركاء Owners / Partners	الرمز No.
شريك Partner	الإمارات العربية المتحدة United Arab Emirates	عبدالباري محمد احمد بن سوقات الفلاسي ABDULBARI MOHAMMAD AHMAD BIN SOUGAT ALFALASI	41858198
شريك Partner	دومينيكا Dominica	حسن حمود HASSAN HAMMOUD	41858197
شريك Partner	دومينيكا Dominica	بثينه المظلوم BOUTHAINA EL MAZLOUM	41911067

**Commercial Activities** : الأنشطة التجارية  
- \* Metal construction contracting - \* مقاولات الإنشاءات المعدنية  
- \* All Kind Building Projects Contracting - \* مقاولات مشاريع المباني بأنواعها

The Contractor is not permitted to practice the activities marked with sign (\*) unless these activities are classified and a Classification certificate is obtained for the department of Department of Urban Planning and Municipalities

لا يحق للمقاول ممارسة الأنشطة المشار إليها بعلامة (\*) إلا بعد الحصول على شهادة التصنيف المعتمدة من دائرة التخطيط العمراني والبلديات.

**Address** : العنوان : الدانة, شرق 11, 0 : مبنى, شليويح سعود محمد عرار  
**Onwani Address** : العنوان الموحد :

وثيقة معتمدة وصادرة بدون توقيع أو ختم من دائرة التنمية الاقتصادية - أبوظبي. للتحقق من صحة البيانات الواردة في الرخصة برجاء زيارة الموقع [www.adbc.gov.ae](http://www.adbc.gov.ae)

Approved document issued without signature or stamp by the Department of Economic Development - Abu Dhabi. To verify the license kindly visit [www.adbc.gov.ae](http://www.adbc.gov.ae)

**Official Email** : البريد الإلكتروني الرسمي : [pro@chcdubai.ae](mailto:pro@chcdubai.ae)  
**Official Mobile** : رقم التواصل الرسمي : +971556521432



هيئة أبوظبي للدفاع المدني  
ABU DHABI CIVIL DEFENCE  
AUTHORITY



[www.adbc.gov.ae](http://www.adbc.gov.ae)



**Rise up. Let us evolve the  
world by making dreams  
into reality  
For, the world is a combination  
of innumerable possibilities**

CHC's project delivery system is designed to provide proactive, innovative and flexible solutions to clients



**Office Address  
(Dubai)**

P.O. Box : 49211, Dubai - UAE  
E-mail : [info@chcdubai.ae](mailto:info@chcdubai.ae)

**Head Office  
(International City)**

Tel : +971 4 450 8661  
Fax : +971 4 450 8626

**Warehouse And Office  
(Jebel Ali)**

Tel : +971 4 883 6969

**Branch  
(Abu Dhabi)**

Tel : +971 55 2282817



سي اتش سي لمقاولات البناء ش.ذ.م.م  
**CHC Building Contracting L.L.C**

[www.chcdubai.ae](http://www.chcdubai.ae)